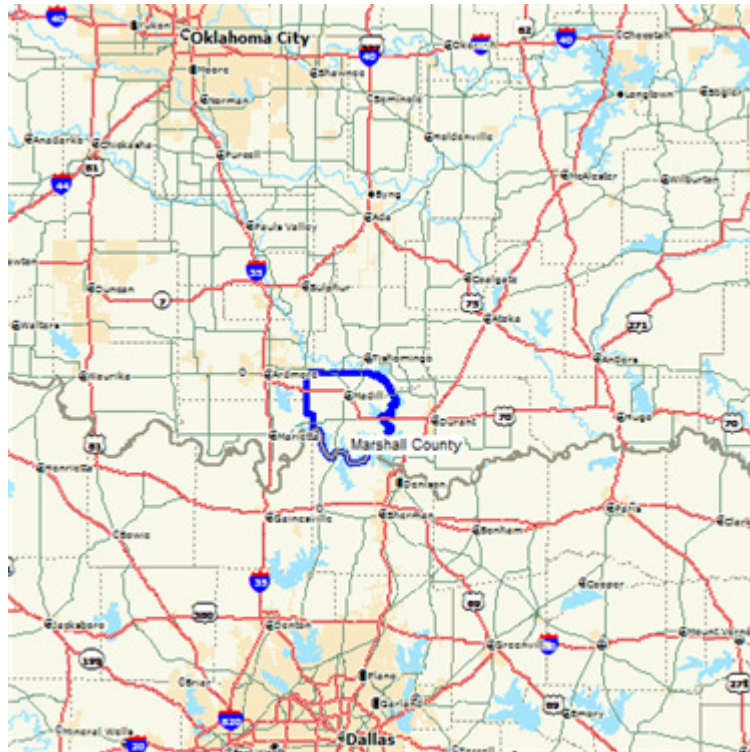


MARSHALL COUNTY, OK

COUNTY ANALYSIS



PREPARED FOR



PREPARED BY



Table of contents

<u>Item</u>	<u>Page</u>
1. PopStats Demographic Data	3
2. Marshall County Area Maps	
Map and Demographics	4
3. Marshall County	
County Map	5
Demographics	6
Growth Summary	9
Housing Value Summary	11
Education Attainment	12
Workplace Summary Report	13
4. Marshall County – Thematic Maps	
Population Distribution	15
Population Changes - Last 2 Years	16
Average Household Income	17
Number of Households with Income > \$50,000	18
Number of Households with Income > \$100,000	19
Age Distribution 18 – 44 Years	20
Age Distribution 65 Years Plus	21
Educational Attainment – College Graduates	22
Workplace Employee Distribution	23
5. Marshall County Extended Area	
Map	24
Demographics	25

Contacts:

Ray Murphy
Northeastern State University
918-605-0919
murphyrf@nsuok.edu

Glenn Glass
Oklahoma Department of Commerce
405-596-1640
glenn_glass@okcommerce.gov

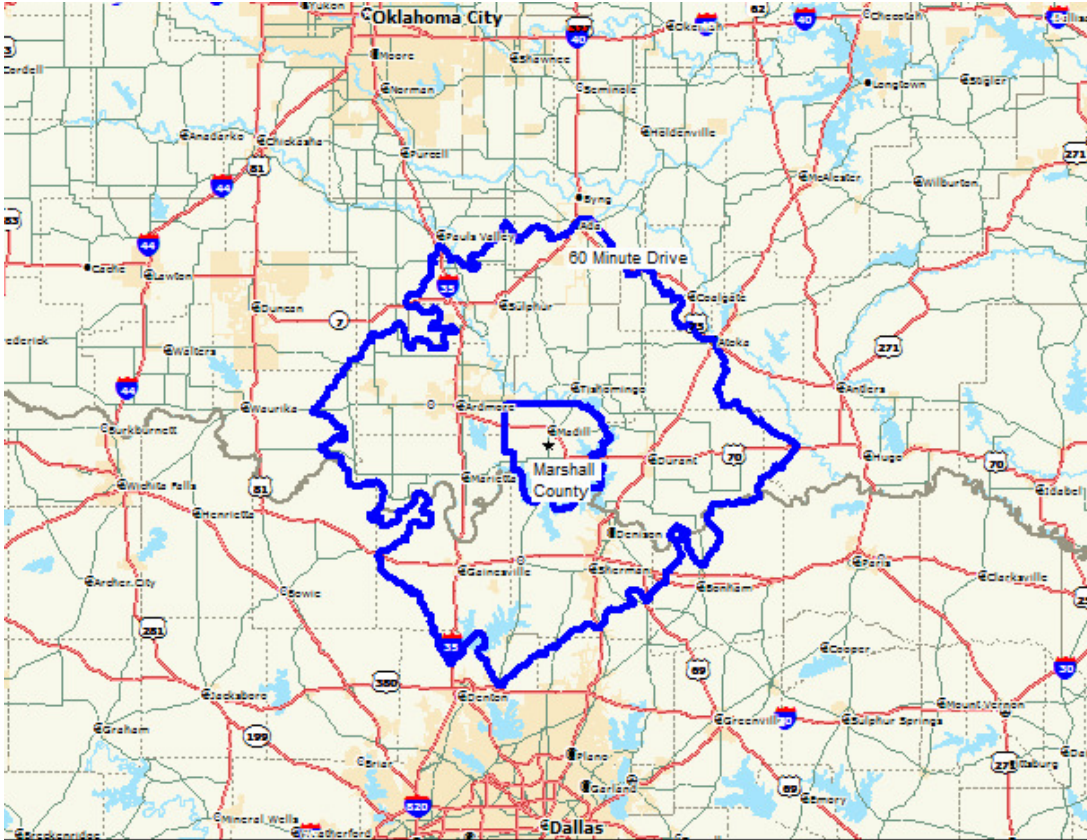
PopStats Demographic Data

This PopStats demographic data utilized in this report is provided by Synergos Technologies. This data is updated quarterly to end users based on new ZIP+4 data (note that new data and statistics are delivered monthly, updated quarterly). This data is modeled where a growth factor is derived for every ZIP+4 in the country. This application occurs via a proprietary model that uses this information as well as other pertinent factors (see below) to generate a current estimate. The data sources for PopStats datasets come from:

- United States Postal Service (USPS)
- United States Department of Defense (DMDC)
- United States Census Bureau
- National Center for Education Statistics (NCES)
- Federal Financial Institutions Examination Council (FFIEC)
- Internal Revenue Service (IRS)
- Bureau of Economic Analysis (BEA)
- Bureau of Labor Statistics (BLS)
- Office of Federal Housing Enterprise Oversight (OFHEO)

Most data vendors and therefore most data analysts are using information that is delivered once annually and is based upon trended census growth figures (i.e., 1990 to 2000). Census trended data misses any new growth that may occur, particularly isolated hot communities that tend to flare up in a few years and sometimes a few quarters.

Marshall County, Oklahoma



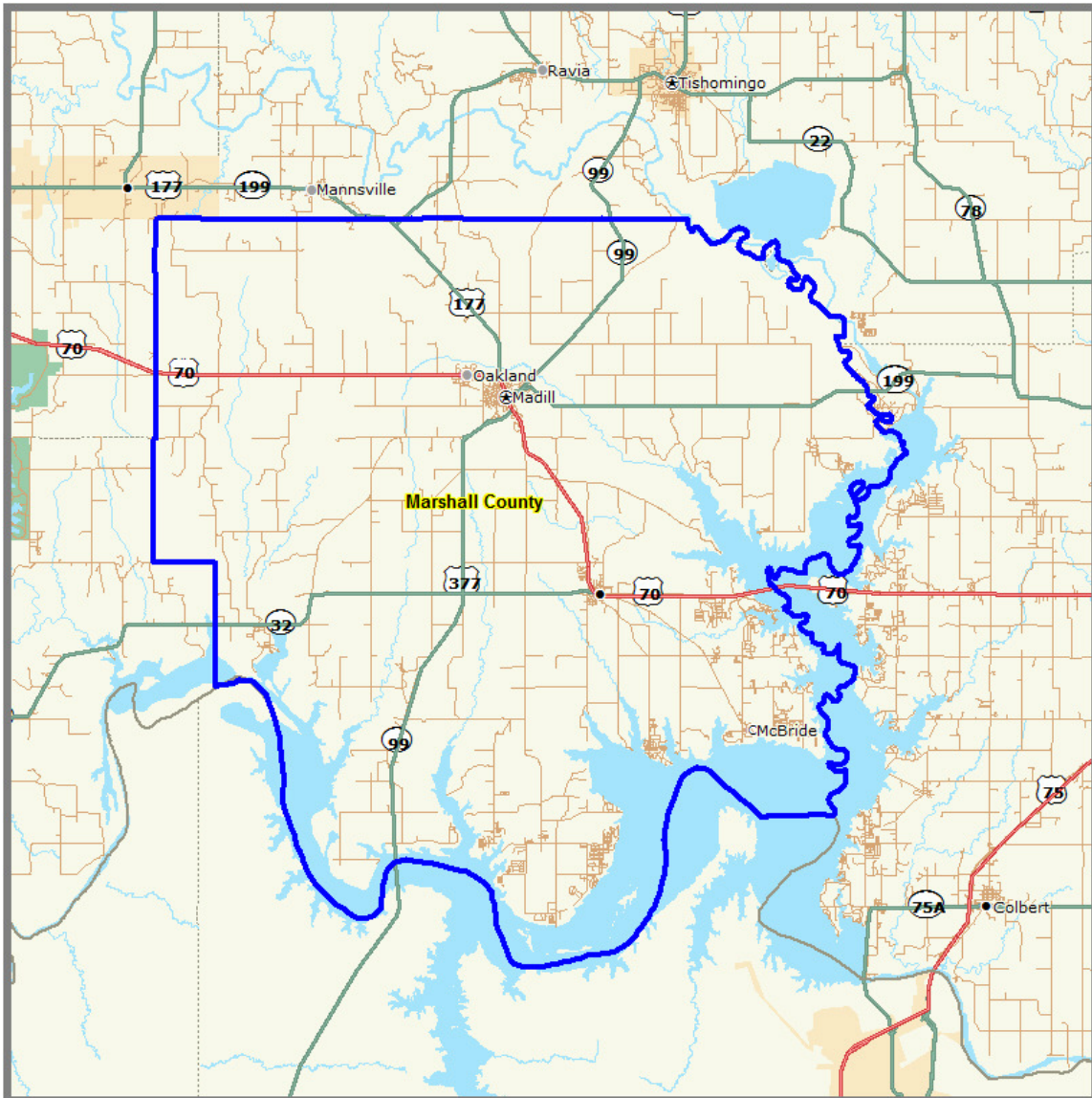
Condensed Demographic Comparison Report




	Marshall County	60 Minute Drive
Q2 2009 Demographics		
Total Population	14,856	341,041
Total Households	6,052	132,911
Age		
Median Age	42	38
Household Income		
Average Household Income	\$45,989	\$54,124
Median Household Income	\$33,557	\$41,776
Per Capita Income	\$18,734	\$21,093
Number of Employees (Full Time)	3,468	117,757
Number of Establishments	299	8,652

(C) 2009 Synergos All Rights Reserved, SRC, LLC.

Marshall County



Marshall County

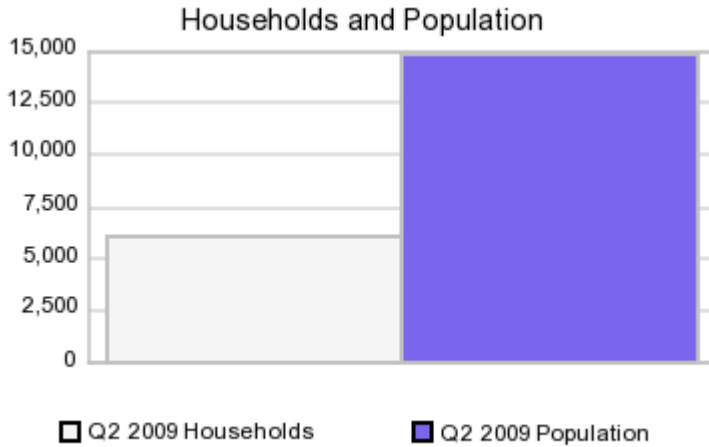
 Marshall County
Boundaries

Executive Summary Report with Charts



Geography: Marshall County

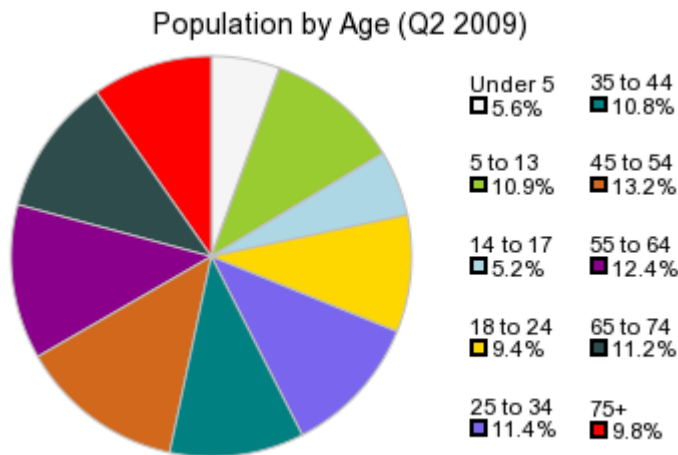
Population Demographics



The number of households in the study area in 2000 was **5,375**. The household count in Q2 2009 is estimated to be **6,052**. For 2014, the High Range of the Five Year forecast was **7,505** and the Low Range was **5,329** with the actual household projection estimated at **6,781**, a change of **12.05%**. The population in the study area in 2000 it was **13,183**. The population in Q2 2009 is estimated to be **14,856**. For 2014, the High Range of the Five Year forecast was **18,424** and the Low Range was **13,071** with the actual household projection estimated at **16,631** representing a change of **11.95%**.

	2000 Census	Q2 2009 Estimate	2014 Projection	Percent Change Q2 2009 to 2014
Total Population	13,183	14,856	16,631	11.95%
Total Households	5,375	6,052	6,781	12.05%

Population by Age



In 2000, the median age of the population was **41**. The median age in Q2 2009 is estimated to be **42** and it is predicted to change in five years to **41** years.

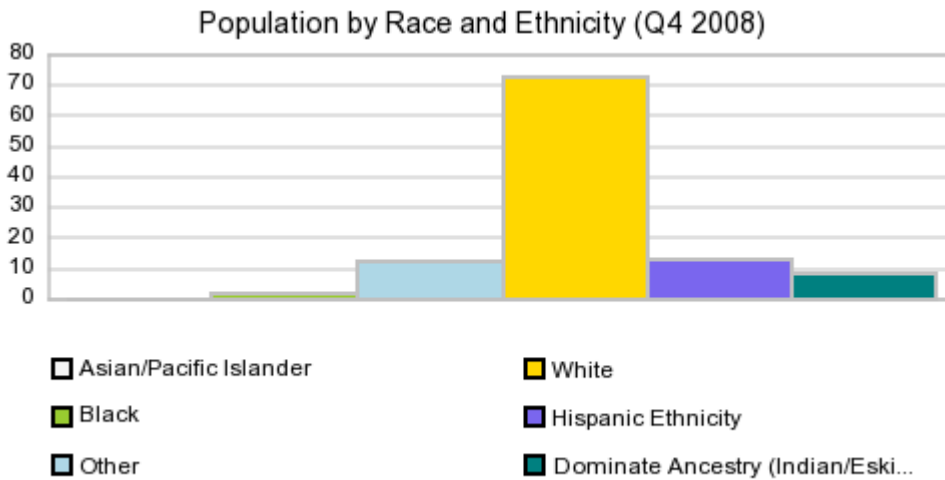
In Q2 2009, females represented **50.89%** of the population with a median age of **44** and males represented **49.11%** of the population with a median age of **40** years.

In Q2 2009, the most prominent age group in this geography is **45 to 54** years. The age group least represented in this geography is **14 to 17** years. The table below sorts age groups by the Q2 2009 Estimate for the Age Groups.

Population by Age

	2000 Census		Q2 2009 Estimate		2014 Projection		Percent Change
							Q2 2009 to 2014
0 to 4	841	6.38%	835	5.62%	979	5.89%	17.24%
5 to 13	1,322	10.03%	1,617	10.88%	1,721	10.35%	6.43%
14 to 17	935	7.09%	770	5.18%	835	5.02%	8.44%
18 to 24	1,008	7.65%	1,403	9.44%	1,542	9.27%	9.91%
25 to 34	1,343	10.19%	1,700	11.44%	2,226	13.38%	30.94%
35 to 44	1,750	13.27%	1,606	10.81%	1,708	10.27%	6.35%
45 to 54	1,733	13.14%	1,966	13.23%	1,992	11.98%	1.32%
55 to 64	1,690	12.82%	1,848	12.44%	2,048	12.31%	10.82%
65 to 74	1,420	10.77%	1,660	11.17%	1,866	11.22%	12.41%
75 +	1,142	8.66%	1,453	9.78%	1,716	10.32%	18.10%
18 to 44	4,101	31.11%	4,709	31.69%	5,475	32.92%	47.20%

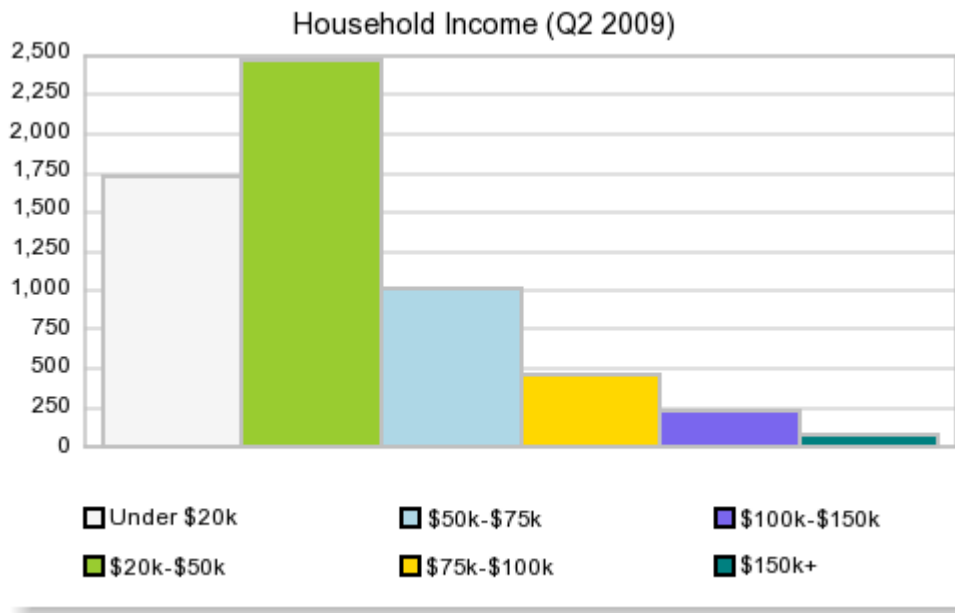
Population by Race/Ethnicity



In Q2 2009, the predominant race/ethnicity category in this study area is **White**. The race & ethnicity category least represented in this geography is **Asian**. Note that the following table is sorted by the predominant Race for Q2 2009.

Population by Race/Ethnicity

	2000 Census		Q2 2009 Estimate	
White	10,061	76.32%	10,728	72.21%
Other Race	1,832	13.90%	1,865	12.55%
Hispanic Ethnicity	1,077	8.17%	1,943	13.08%
Black	202	1.53%	286	1.92%
Asian	11	0.08%	35	0.24%
Dominate Ancestry (Native American)			1,239	8.34%



In Q2 2009 the predominant household income category in this study area is **\$20k to \$50k**, and the income group that is least represented in this geography is **\$150K +**. The following table ranks income groups by the Q2 2009 Income Classes.

Households by Income

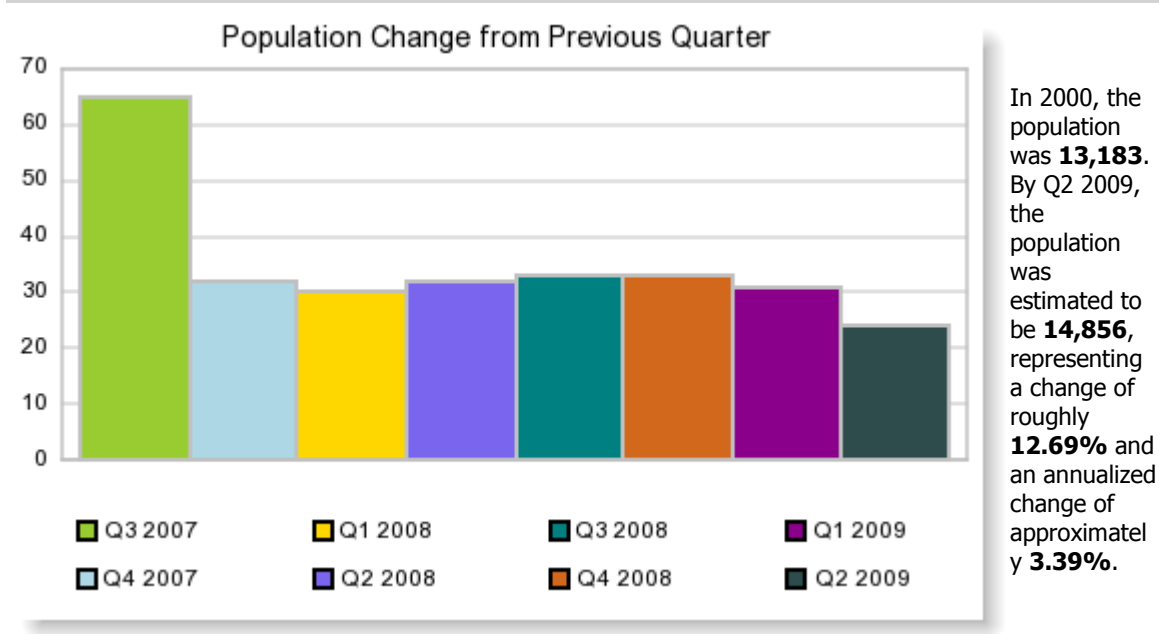
	2000 Census		Q2 2009 Estimate	
\$0 - \$19,999	2,019	37.57%	1,737	28.71%
\$20,000 - \$49,999	2,240	41.68%	2,481	41.00%
\$50,000 - \$74,999	695	12.93%	1,014	16.76%
\$75,000 - \$99,999	227	4.22%	468	7.73%
\$100,000 - \$149,999	111	2.07%	230	3.80%
\$150,000 +	82	1.53%	79	1.31%
\$50,000 +	1,115	20.75%	1,791	29.60%
Average Hhld Income	\$36,348.00		\$45,989.00	
Median Hhld Income	\$26,374.00		\$33,557.00	
Per Capita Income	\$14,819		\$18,734	

(C) 2008 Synergos All Rights Reserved, SRC, LLC.
 (C) 2009 Synergos All Rights Reserved, SRC, LLC.

Growth Summary Report

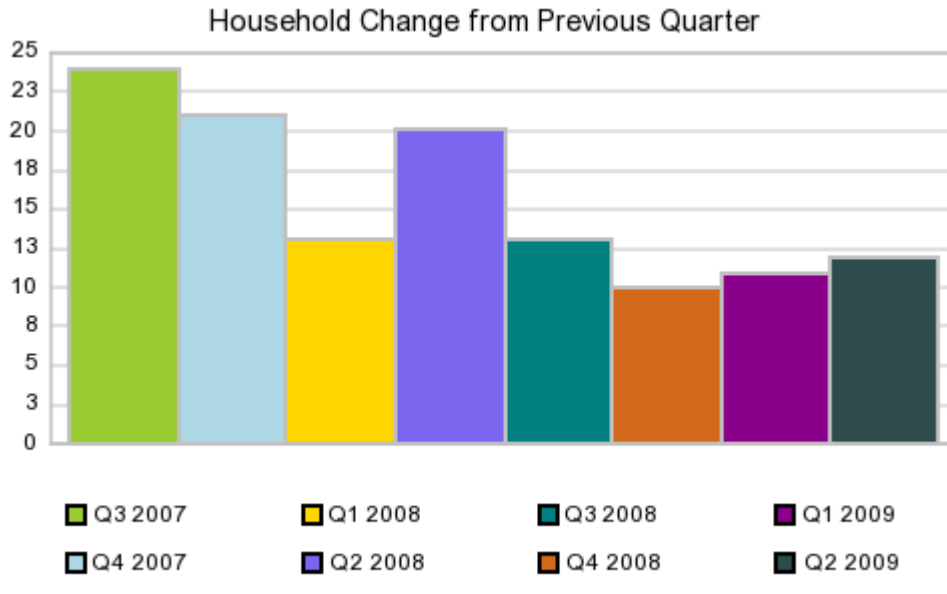


Geography: Marshall County



Population Change

Quarter	Population Change from Previous Quarter		
	Population	Change	% Change
Q3 2007	14,641	65	0.45%
Q4 2007	14,673	32	0.22%
Q1 2008	14,703	30	0.20%
Q2 2008	14,735	32	0.22%
Q3 2008	14,768	33	0.22%
Q4 2008	14,801	33	0.22%
Q1 2009	14,832	31	0.21%
Q2 2009	14,856	24	0.16%



In 2000, there were **5,375** households. By Q2 2009, the household count was estimated to be **6,052**, representing a change of roughly **12.60%** and an annualized change of approximately **3.36%**.

Household Change

Quarter	Households	Household Change from Previous Quarter	
		Change	% Change
Q3 2007	5,952	24	0.41%
Q4 2007	5,973	21	0.35%
Q1 2008	5,986	13	0.22%
Q2 2008	6,006	20	0.33%
Q3 2008	6,019	13	0.22%
Q4 2008	6,029	10	0.17%
Q1 2009	6,040	11	0.18%
Q2 2009	6,052	12	0.20%

(C) 2008 Synergos All Rights Reserved, SRC, LLC.
 (C) 2009 Synergos All Rights Reserved, SRC, LLC.

Housing Value Summary



Geography: Marshall County

Housing Units Q2 2009

Housing Units	9,188
Owner-Occupied	52.28%
Renter-Occupied	13.58%
Vacant	34.14%

Housing Value

Under \$10,000	1.87%
\$ 10,000 to \$14,999	2.85%
\$ 15,000 to \$19,999	4.48%
\$ 20,000 to \$25,000	0.21%
\$ 25,000 to \$29,999	3.87%
\$ 30,000 to \$34,999	4.83%
\$ 35,000 to \$39,999	0.31%
\$ 40,000 to \$49,999	11.31%
\$ 50,000 to \$59,999	7.31%
\$ 60,000 to \$69,999	10.14%
\$ 70,000 to \$79,999	6.43%
\$ 80,000 to \$89,999	5.54%
\$ 90,000 to \$99,999	8.10%
\$ 100,000 to \$124,999	14.07%
\$ 125,000 to \$149,999	6.33%
\$ 150,000 to \$174,999	3.29%
\$ 175,000 to \$199,999	2.39%
\$ 200,000 to \$249,999	2.75%
\$ 250,000 to \$299,999	1.64%
\$ 300,000 to \$399,999	1.10%
\$ 400,000 to \$499,999	0.58%
\$ 500,000 to \$749,999	0.46%
\$ 750,000 to \$999,999	0.06%
Over \$1,000,000	0.06%

Average Home Value by Quarter

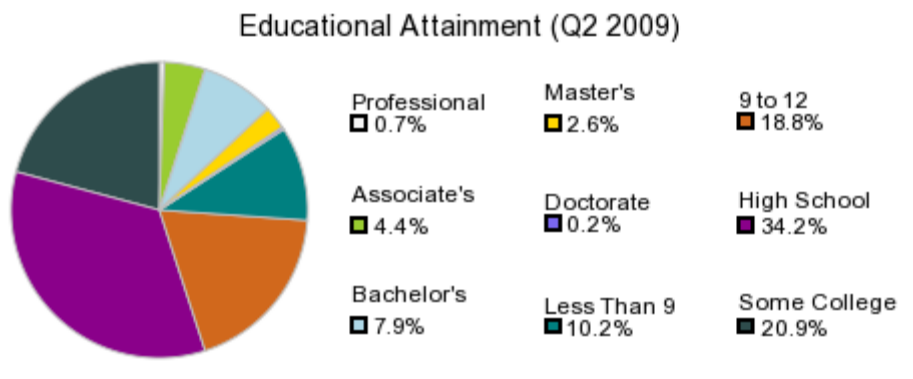
Average Home Value 07Q2	\$86,918
Average Home Value 07Q3	\$87,962
Average Home Value 07Q4	\$89,533
Average Home Value 08Q1	\$90,168
Average Home Value 08Q2	\$90,355
Average Home Value 08Q3	\$91,231
Average Home Value 08Q4	\$91,148
Average Home Value 09Q1	\$91,672
Average Home Value Est Current Qtr	\$90,868
Median Home Value Q2 2009	\$73,937

Educational Attainment

Geography: Marshall County

Educational Attainment	
College - Associate	451
College - Bachelors	812
College - Doctorate	21
College - Masters	269
College - Professional	67
Grade Less than 9	1,047
Grade 9 to 12	1,924
High School	3,502
Some college	2,140
Total Educated	10,232

Educational Attainment: By Percent (%) Chart



Educational Attainment: By Percent (%)

% College Associate	4.41%
% College Bachelors	7.94%
% College Doctorate	0.21%
% College Masters	2.63%
% College Professional	0.65%
% Grade 9 to 12	18.80%
% Grade Less than 9	10.23%
% High School	34.22%
% Some College	20.91%

Workplace Summary Report



Geography: Marshall County

Q2 2009 Business Summary

Employees Est	3,468
Establishment Est	299
Average Employee Size	12

Q2 2009 Employees By Occupation

	Count	%
<i>"White Collar" Employees</i>	1,047	30.2%
Management occupations	172	5.0%
Business and financial operations occupations	108	3.1%
Computer and mathematical science occupations	36	1.0%
Architecture and engineering occupations	31	0.9%
Life, physical, and social science occupations	19	0.5%
Community and social services occupations	93	2.7%
Legal occupations	16	0.5%
Education, training, and library occupations	153	4.4%
Arts, design, entertainment, sports, and media occupations	23	0.7%
Healthcare practitioners and technical occupations	189	5.5%
Healthcare support occupations	207	6.0%

Salary/Wage per Employee per Annum CrYr

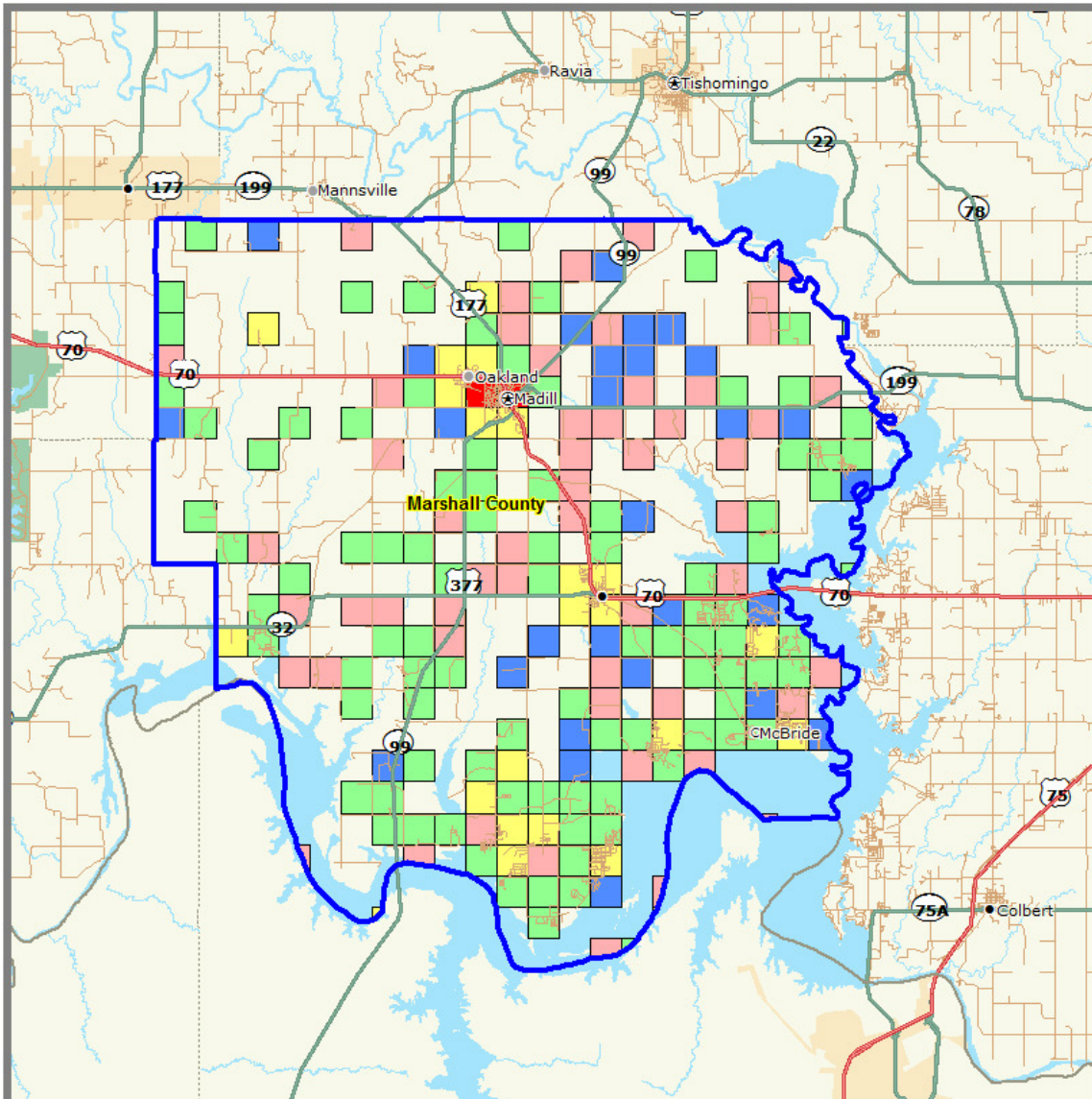
	Count	%
Average Employee Salary	\$30,685	
Median Employee Salary	\$28,100	
Under \$10,000	117	3.4%
\$10,000 to \$19,999	618	17.8%
\$20,000 to \$29,999	1,282	37.0%
\$30,000 to \$39,999	813	23.4%
\$40,000 to \$49,999	276	8.0%
\$50,000 to \$59,999	141	4.1%
\$60,000 to \$74,999	118	3.4%
\$75,000 to \$84,999	96	2.8%
\$85,000 to \$99,999	5	0.1%
\$100,000	2	0.1%

<i>"Blue Collar" Employees</i>	2,397	69.1%
Protective service occupations	44	1.3%
Food preparation and serving related occupations	198	5.7%
Building and grounds cleaning and maintenance occupations	82	2.4%
Personal care and service occupations	111	3.2%
Sales and related occupations	457	13.2%
Office and administrative support occupations	543	15.7%
Farming, fishing, and forestry occupations	6	0.2%
Construction and extraction occupations	171	4.9%
Installation, maintenance, and repair occupations	138	4.0%
Production occupations	457	13.2%
Transportation and material moving occupations	190	5.5%
<i>Military</i>	0	0.0%
<i>Unclassified</i>	24	0.7%

Q2 2009 By Industry	Employees	% Establishments	%
Agriculture, Forestry, Fishing and Hunting	20	0.6%	3 1.0%
Mining	4	0.1%	1 0.3%
Utilities	7	0.2%	1 0.3%
Construction	162	4.7%	26 8.7%
Manufacturing	704	20.3%	7 2.3%
Wholesale Trade	31	0.9%	5 1.7%
Retail Trade	677	19.5%	48 16.1%
Transportation and Storage	34	1.0%	3 1.0%
Information	38	1.1%	2 0.7%
Finance and Insurance	177	5.1%	24 8.0%
Real Estate and Rental and Leasing	50	1.4%	15 5.0%
Professional, Scientific, and Technical Services	52	1.5%	14 4.7%
Management of Companies and Enterprises	0	0.0%	0 0.0%
Admin/Support and Waste Management and Remediation Services	9	0.3%	4 1.3%
Educational services	73	2.1%	6 2.0%
Health Care and Social Assistance	737	21.3%	29 9.7%
Arts, Entertainment, and Recreation	36	1.0%	5 1.7%
Accommodation and Food Services	156	4.5%	18 6.0%
Other Services (except Public Administration)	183	5.3%	47 15.7%
Public Administration	310	8.9%	38 12.7%
Military	0	0.0%	0 0.0%
Unknown classification	8	0.2%	3 1.0%

(C) 2009 Synergos All Rights Reserved, SRC, LLC.

Population Distribution



Marshall County - Population Distribution

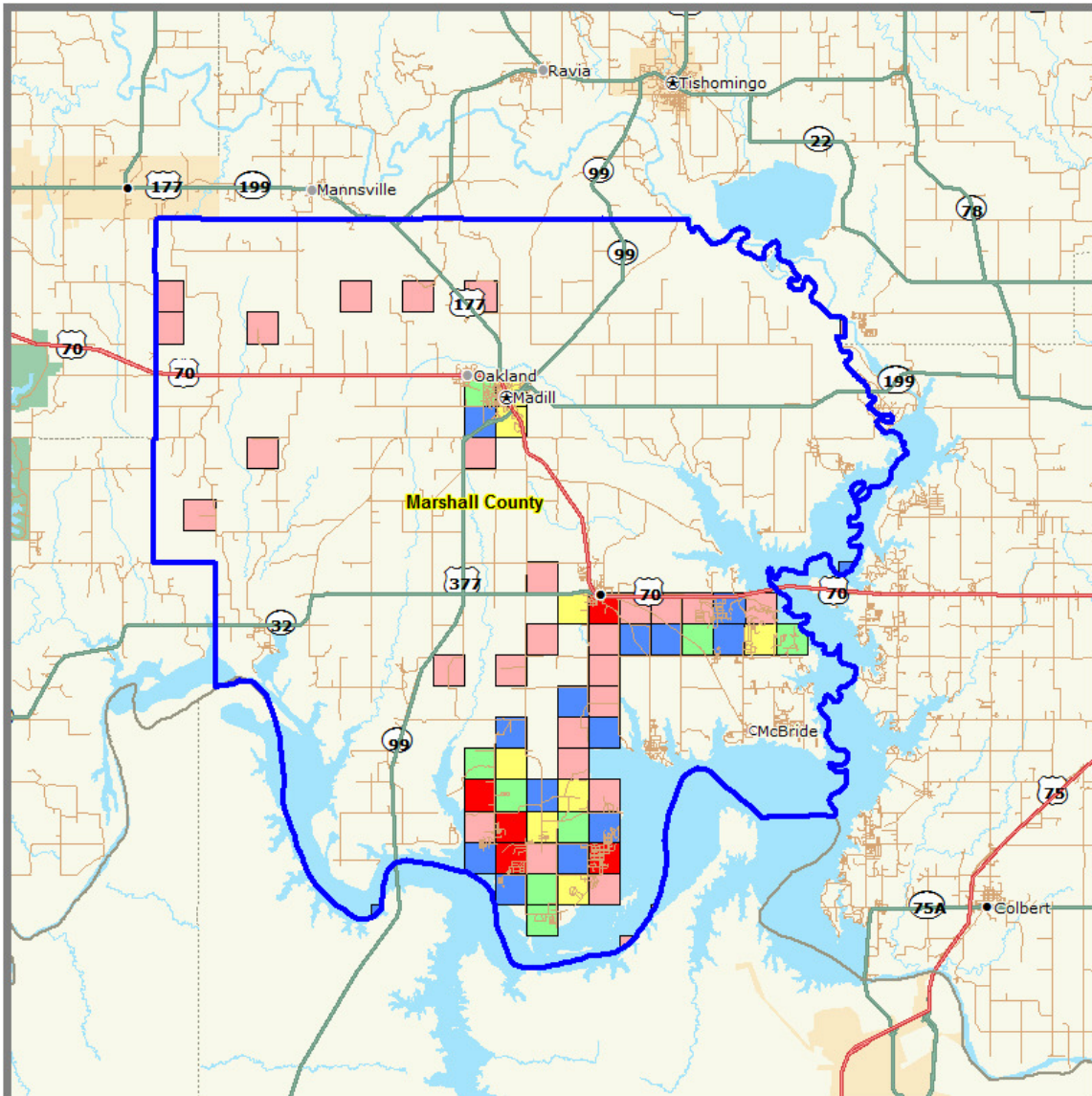
Marshall County Boundaries

1 Mile Grids - 2nd Qtr 2009

- 1,650 to 1,790
- 140 to 1,650
- 20 to 140
- 10 to 20
- 0 to 10

Demographics
Synergos - PopStats
2nd Qtr 2009

2 Year Population Growth



Marshall County - 2 Year Population Growth

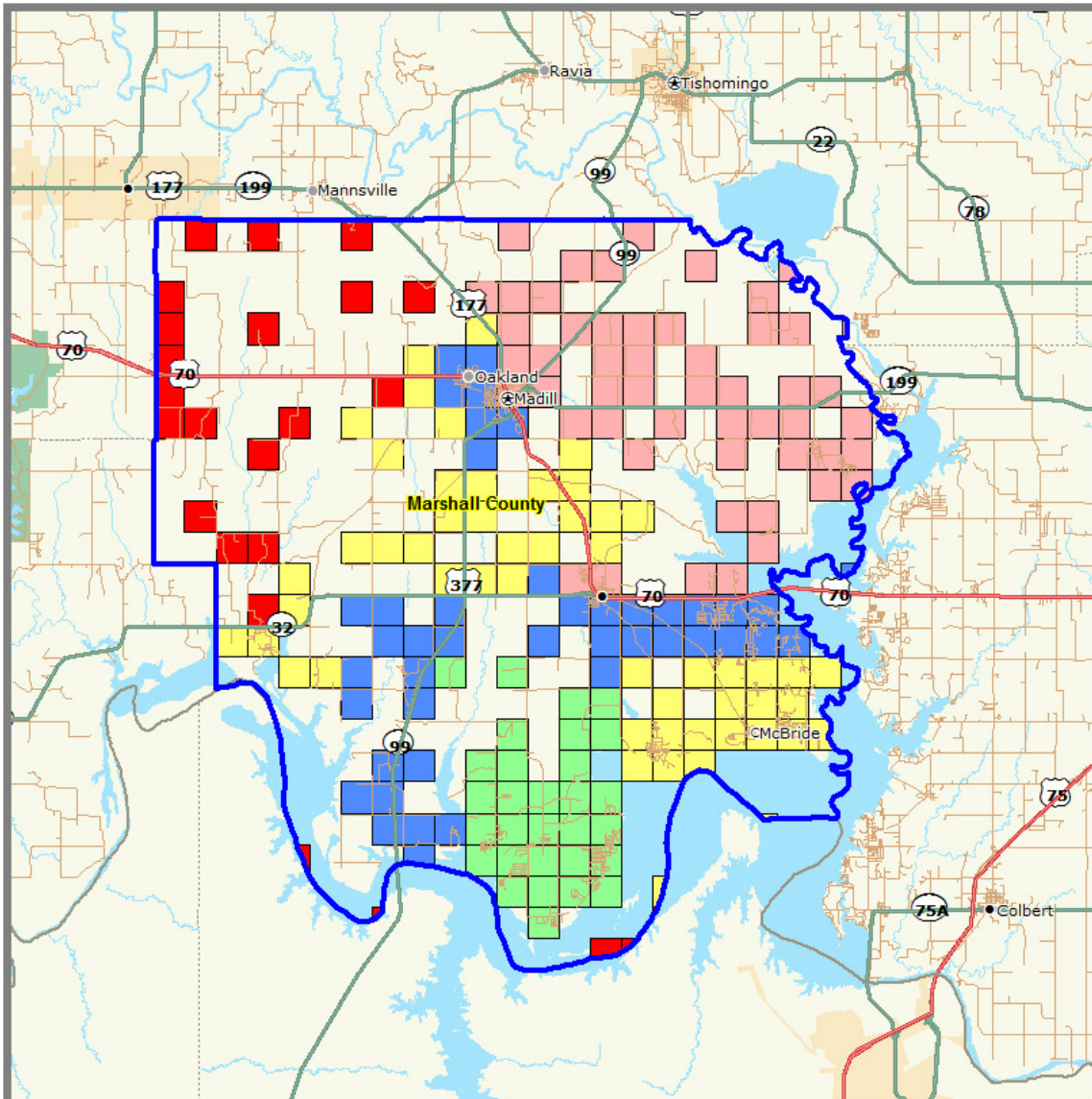
Marshall County Boundaries

1 Mile Grids - 2nd Qtr 2009

- 32 to 40
- 16 to 32
- 9 to 16
- 4 to 9
- 1 to 4

Demographics
Synergos - PopStats
2nd Qtr 2009

Average Household Income Distribution



Marshall County - Average Household Income Distribution

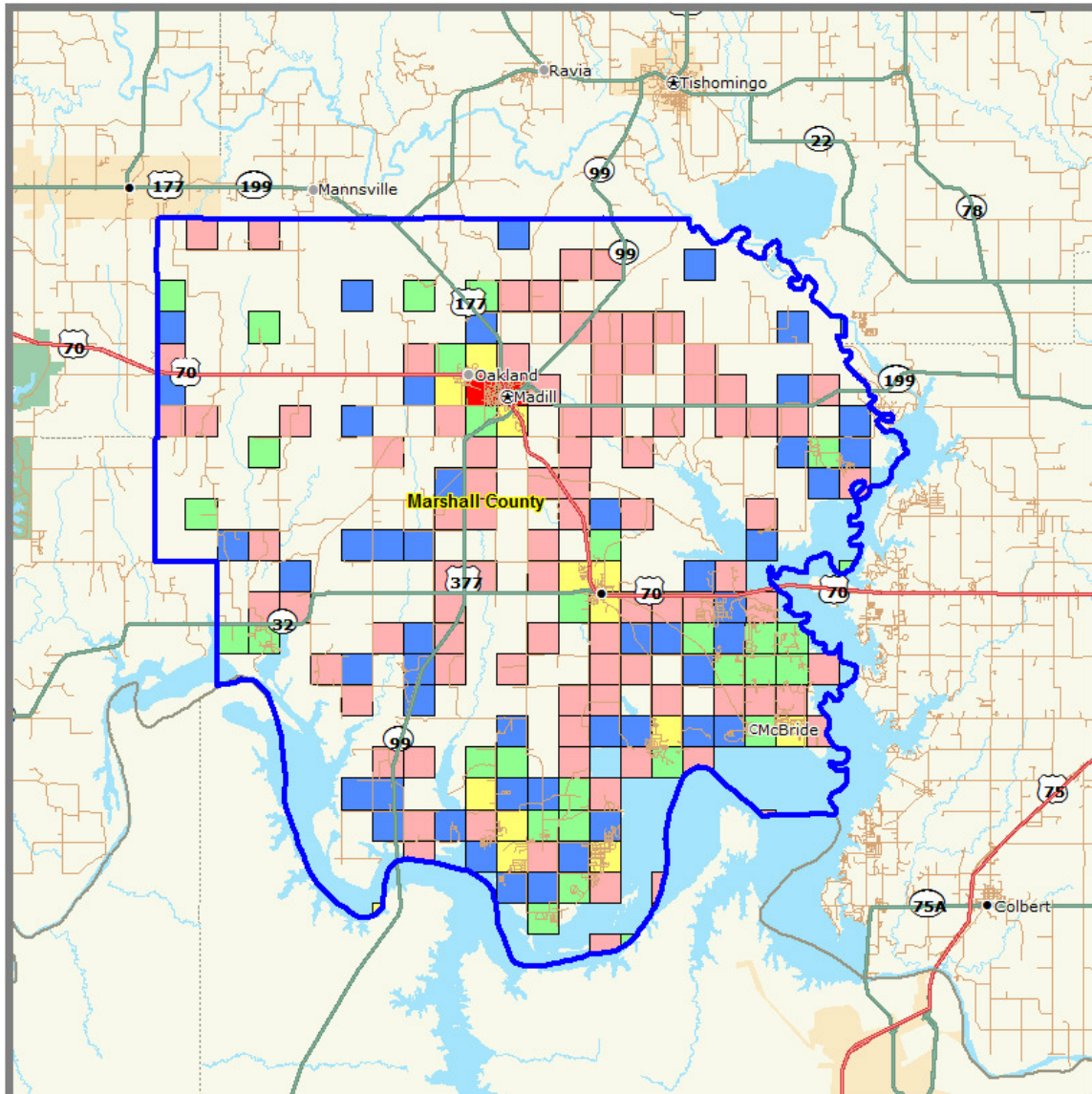
Marshall County Boundaries

1 Mile Grids - 2nd Qtr 2009

- 57,100 to 69,500
- 51,400 to 57,100
- 48,700 to 51,400
- 43,000 to 48,700
- 23,900 to 43,000
- all others

Demographics
Synergos - PopStats
2nd Qtr 2009

Number of Households with Incomes Greater than \$50,000



Marshall County - Number of HHolds with Income > \$50,000

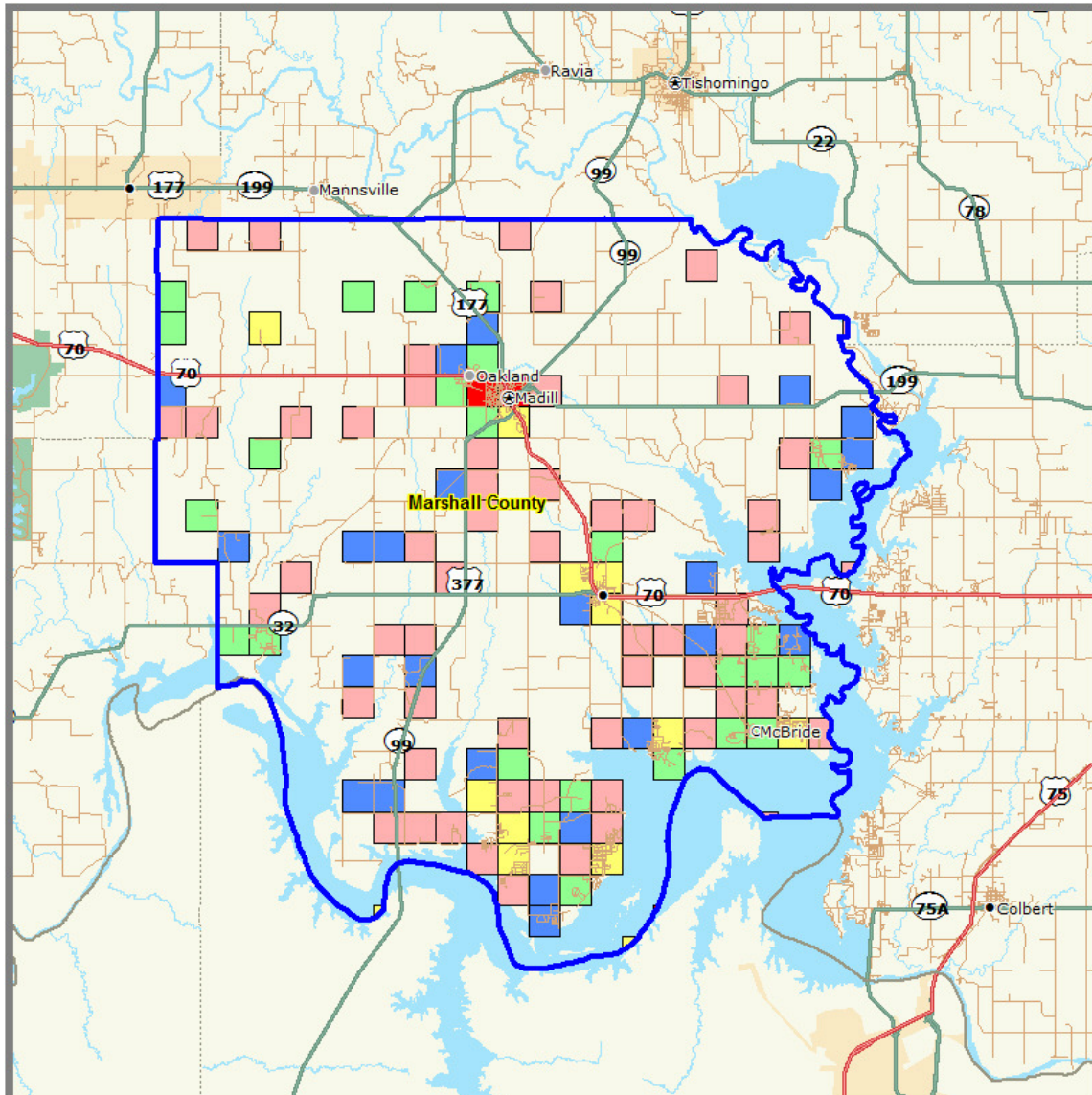
Marshall County Boundaries

1 Mile Grids - 2nd Qtr 2009

- 95 to 217
- 33 to 95
- 12 to 33
- 5 to 12
- 1 to 5

Demographics
Synergis - PopStats
2nd Qtr 2009

Number of Households with Incomes Greater than \$100,000



Marshall County - Number of HHolds with Income > \$100,000

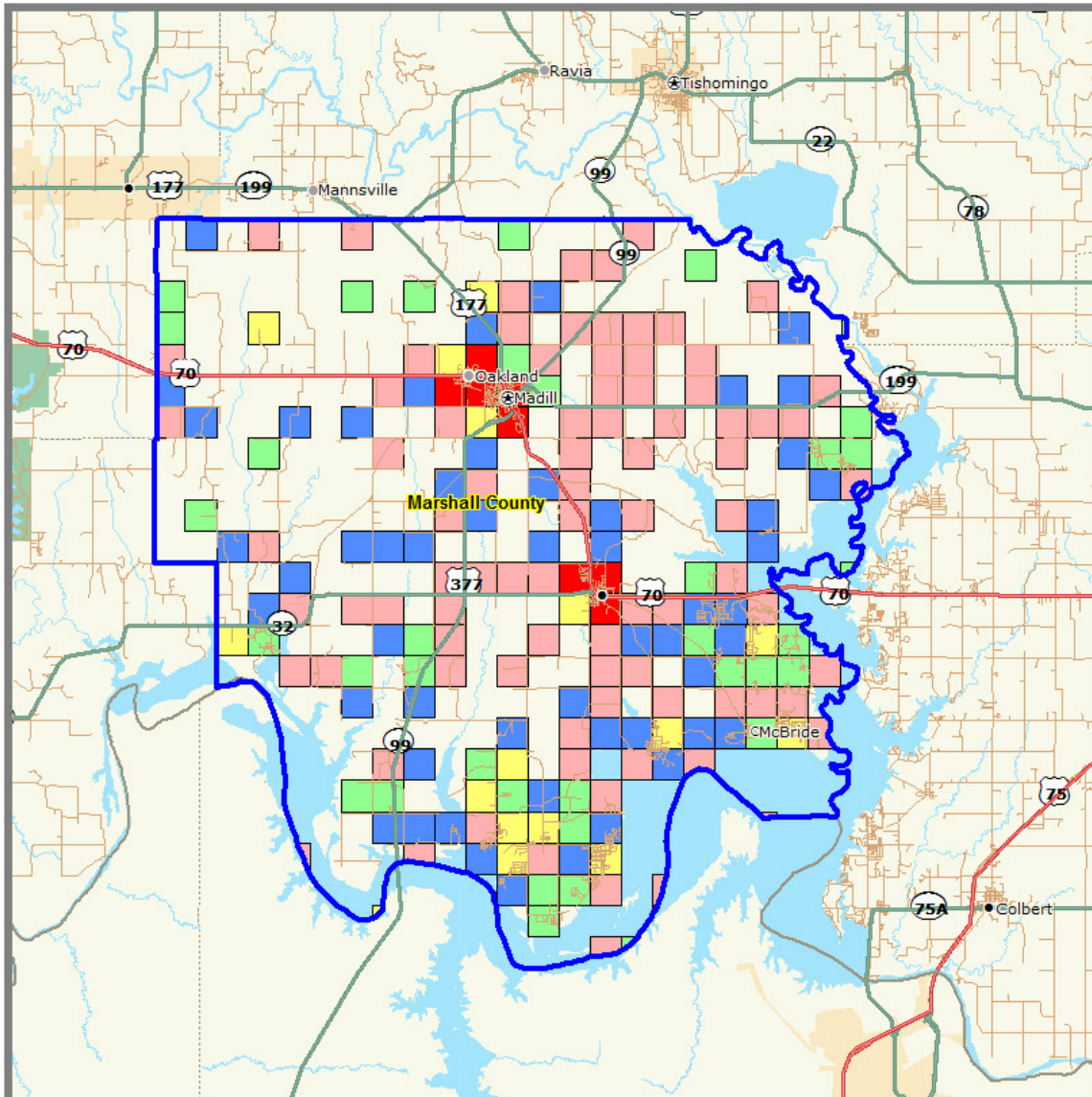
Marshall County Boundaries

1 Mile Grids - 2nd Qtr 2009

- 20 to 40
- 6 to 20
- 3 to 6
- 2 to 3
- 1 to 2

Demographics
Synergos - PopStats
2nd Qtr 2009

Age Distribution 18 – 44 Years



Marshall County - Age Distribution 18 - 44 Years

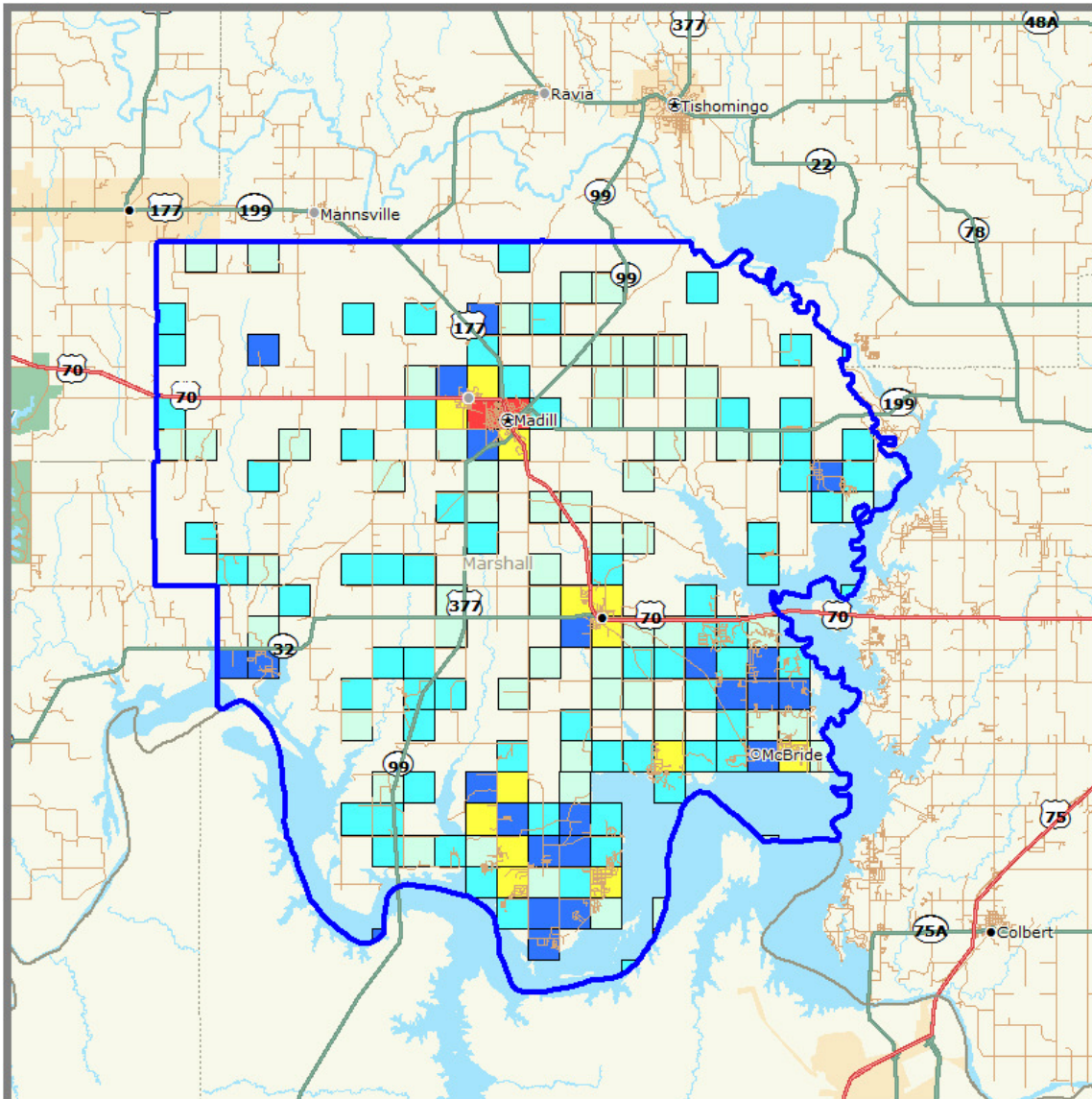
Marshall County Boundaries

1 Mile Grids - 2nd Qtr 2009

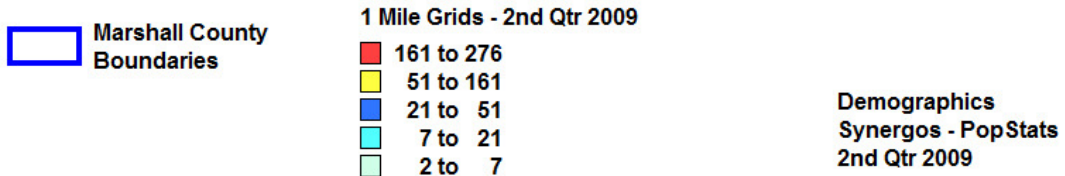
- 136 to 660
- 40 to 136
- 19 to 40
- 7 to 19
- 1 to 7

Demographics
Synergos - PopStats
2nd Qtr 2009

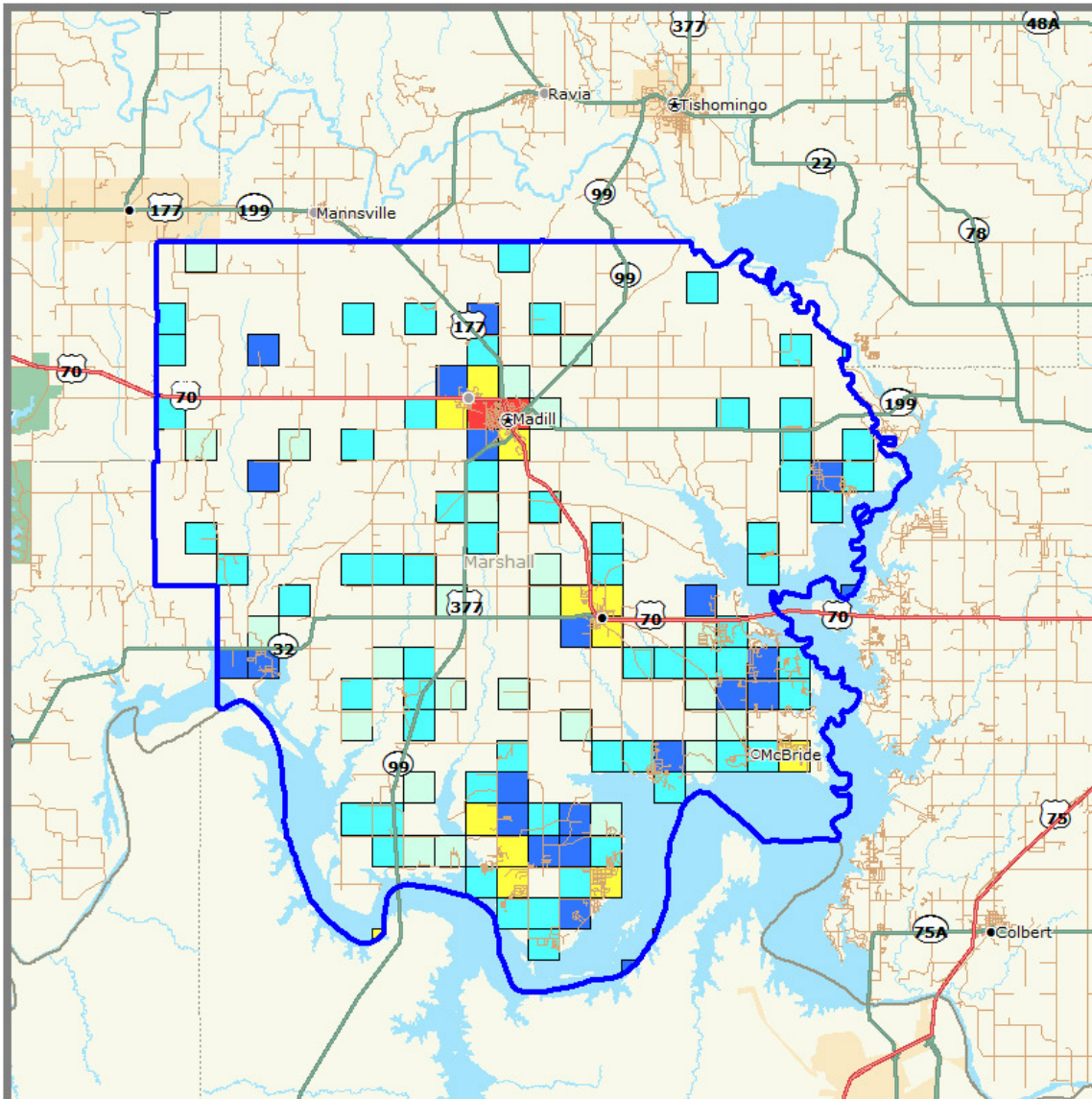
Age Distribution 65 Years Plus



Marshall County - Age Distribution 65 Years Plus



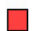
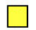

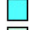

College Graduates



Marshall County - College Graduates

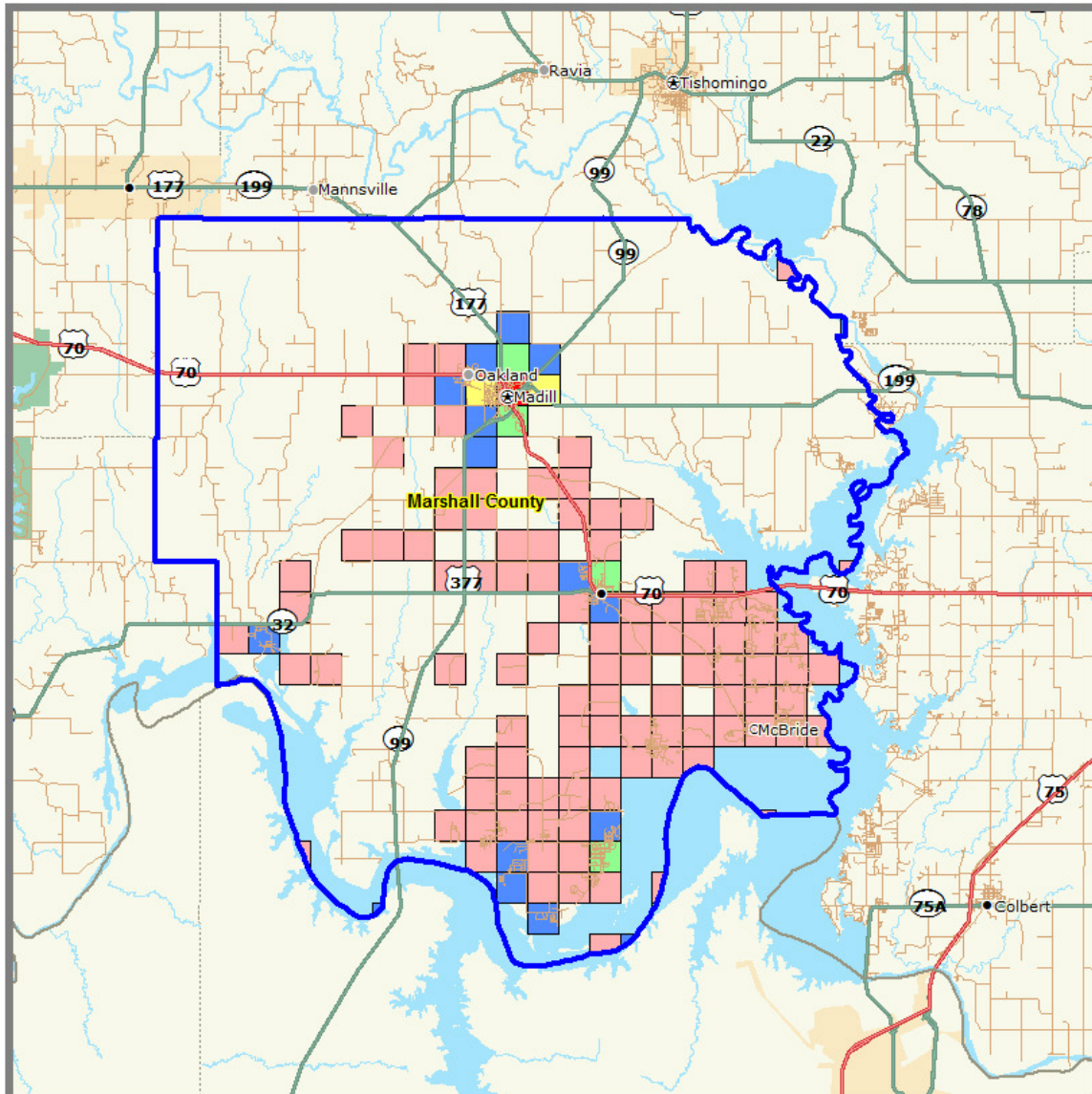
 Marshall County Boundaries

1 Mile Grids - 2nd Qtr 2009

-  63 to 141
-  21 to 63
-  8 to 21
-  3 to 8
-  2 to 3

Demographics
Synergos - PopStats
2nd Qtr 2009

Workplace Employee Distribution



Marshall County - Workplace Employee Distribution

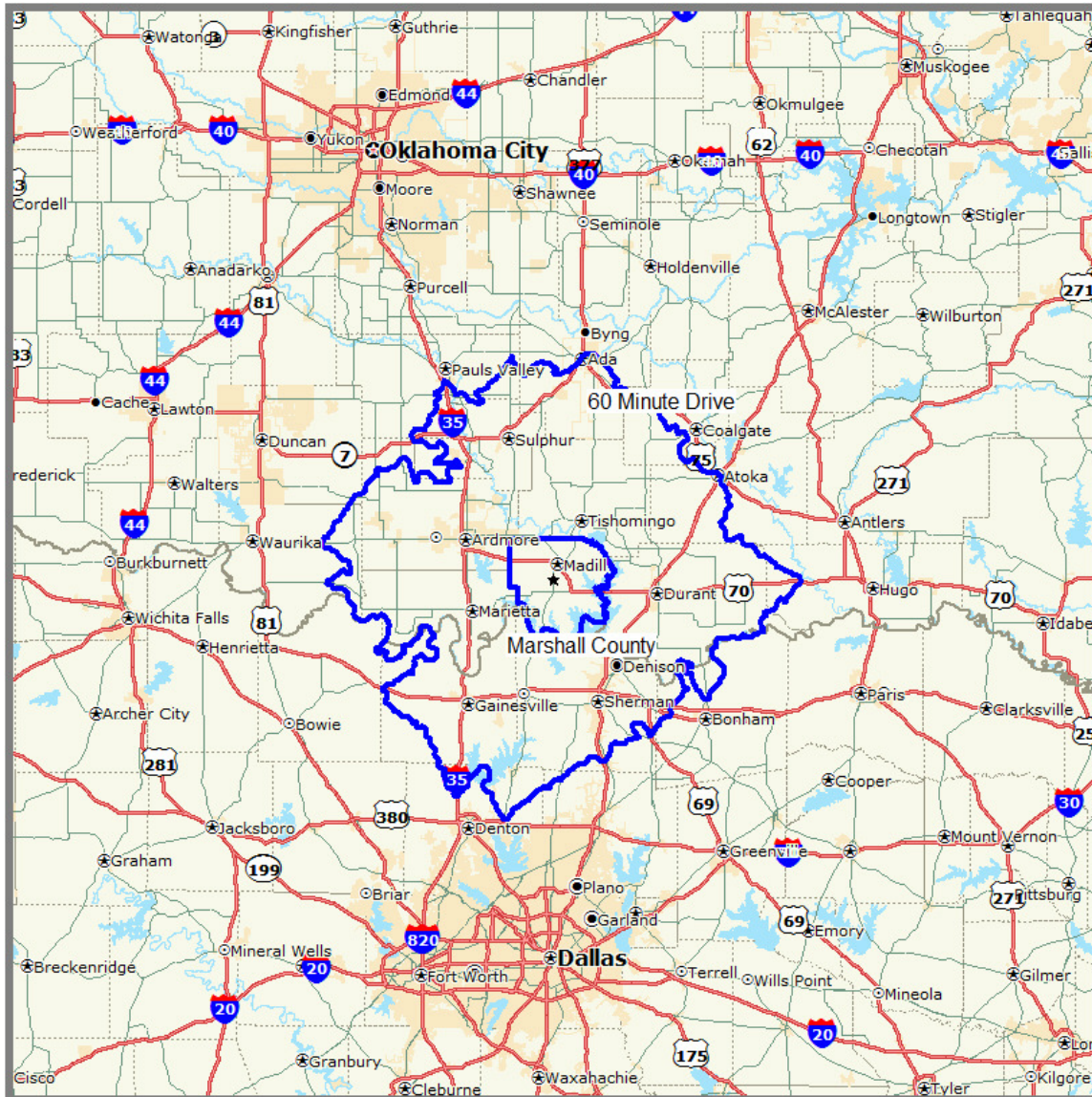
Marshall County Boundaries

1 Mile Grids - 2nd Qtr 2009

- 1,930 to 1,940
- 220 to 1,930
- 60 to 220
- 10 to 60
- 0 to 10

Demographics
Synergos - PopStats
2nd Qtr 2009

Marshall County Extended Area



Marshall County, Oklahoma

Condensed Demographic Comparison Report



Marshall County

60 Minute Drive

Q2 2009 Demographics

Total Population	14,856	341,041
Total Households	6,052	132,911
Female Population	7,560	173,871
% Female	50.89%	50.98%
Male Population	7,296	167,169
% Male	49.11%	49.02%
Population Density (per Sq. Mi.)	34.83	51.66

Age

Age 0 - 4	5.62%	6.70%
Age 5 - 13	10.88%	11.73%
Age 14 - 17	5.18%	5.23%
Age 18 - 21	5.40%	6.09%
Age 22 - 24	4.04%	4.39%
Age 25 - 34	11.44%	12.63%
Age 35 - 44	10.81%	11.58%
Age 45 - 54	13.23%	13.79%
Age 55 - 64	12.44%	11.83%
Age 65 - 74	11.17%	8.58%
Age 75 - 84	7.63%	5.60%
Age 85 +	2.15%	1.84%
Median Age	42	38

Race and Ethnicity

White	84.31%	85.36%
Black	2.00%	4.52%
Asian or Pacific Islander	0.34%	0.65%
Other	13.35%	9.47%

Ethnicity

Hispanic	13.08%	8.38%
Non-Hispanic	86.92%	91.62%

Dominate Ancestry

Native American (Indian/Eskimo)	8.34%	5.86%
---------------------------------	-------	-------

Household Income

Income \$ 0 - \$9,999	11.45%	9.48%
Income \$ 10,000 - \$14,999	8.00%	6.63%
Income \$ 15,000 - \$24,999	17.34%	13.27%
Income \$ 25,000 - \$34,999	15.27%	12.75%
Income \$ 35,000 - \$49,999	17.65%	16.65%

Income \$ 50,000 - \$74,999	16.76%	19.55%
Income \$ 75,000 - \$99,999	7.73%	10.61%
Income \$100,000 - \$124,999	2.76%	5.30%
Income \$125,000 - \$174,999	1.69%	3.55%
Income \$175,000 +	0.66%	1.24%
Average Household Income	\$45,989	\$54,124
Median Household Income	\$33,557	\$41,776
Per Capita Income	\$18,734	\$21,093
Number of Employees (Full Time)	3,468	117,757
Number of Establishments	299	8,652

2014 Demographics

Total Population	16,631	363,040
Total Households	6,781	141,408
Female Population	8,457	184,738
% Female	50.85%	50.89%
Male Population	8,174	178,302
% Male	49.15%	49.11%

(C) 2008 SRC, LLC
(C) 2009 Synergos All Rights Reserved, SRC, LLC.